

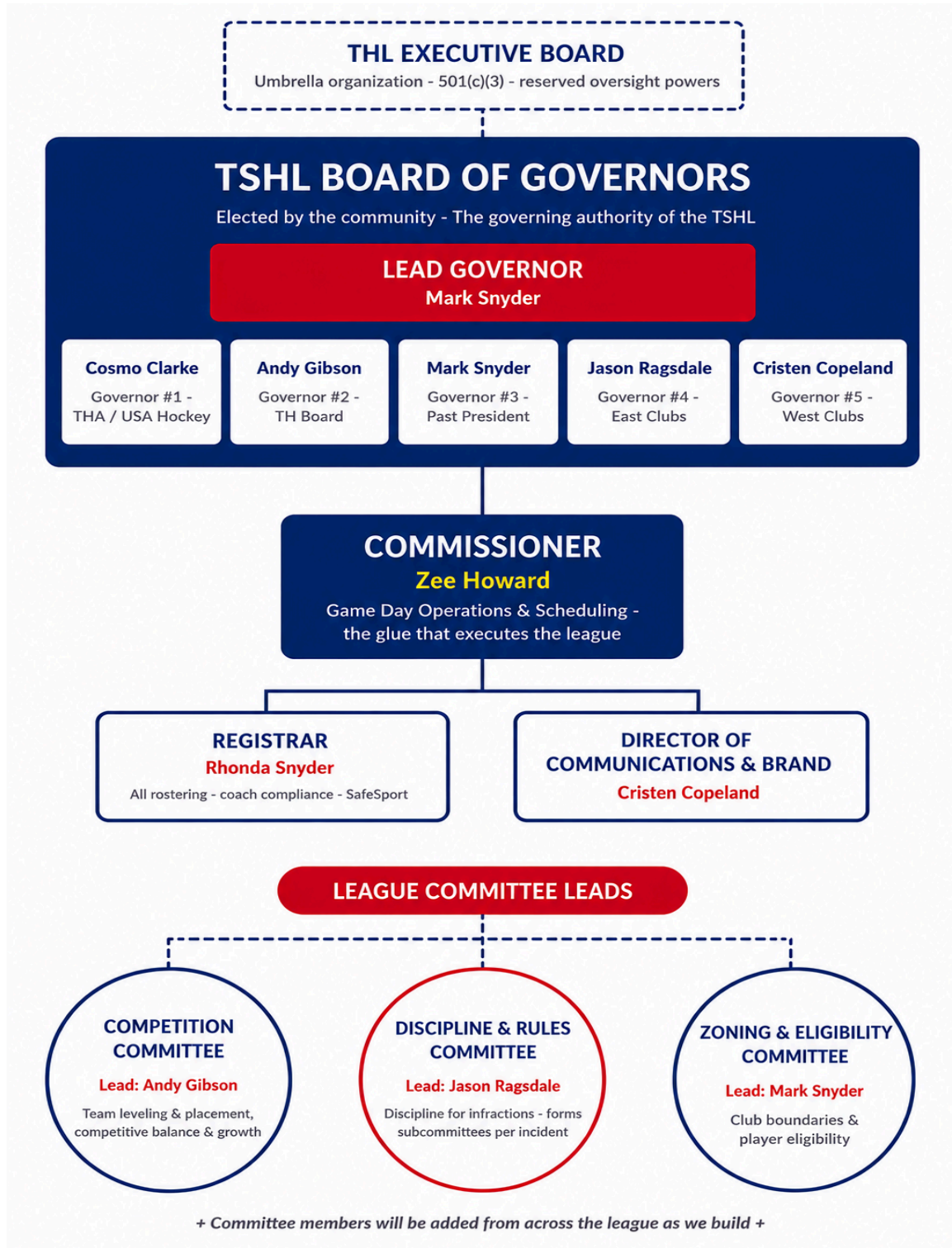


TEXAS SCHOLASTIC HOCKEY LEAGUE

League Structure & Governance

Built by the community, for the community.

How the TSHL is organized to run, grow, and protect high school hockey in North Texas.



How the TSHL Works

The Foundation: THL Umbrella

The TSHL operates as the dedicated high school league under the **Texas Hockey League (THL)**, a 501(c)(3) nonprofit. The THL Executive Board provides the umbrella structure and holds reserved oversight powers, while entrusting the day-to-day and season-to-season leadership of the TSHL to the Board of Governors below.

Board of Governors: The League's Leadership

Five Governors, **elected by you, the clubs and community**, govern the TSHL. Each seat represents a distinct constituency: TAHA/USA Hockey, the THL Board, past high school association leadership, and the Eastern and Western clubs.

Lead Governor

Mark Snyder, governor@texasscholastichockeyleague.com

Elected by the five Governors, the Lead Governor serves as **the point of contact for the Board of Governors**.

Commissioner

Zee Howard, commissioner@texasscholastichockeyleague.com

The Commissioner will hold league meetings, **communicate with league members on a weekly basis**, and is the go-getter for the league. The Commissioner builds the season **schedule** and manages **game-day operations across the league**. The Commissioner will work to execute the Governors' vision while bringing their own ideas to the Governors.

Registrar

Rhonda Snyder, registrar@texasscholastichockeyleague.com

The Registrar will take care of **all rostering, including coach compliance and SafeSport**.

Director of Communications & Brand

Cristen Copeland

Works side by side with the Commissioner to ensure we **celebrate our players' achievements**, deliver **monthly newsletters**, and keep the community connected through **social media updates**.

League Committee Leads

Committees are where the community does the work of the league. **Committee members will be added from across the league as we build.** Additional committees will be created throughout the season as needed. Each committee will pull in volunteers from clubs around the league and form subcommittees as needed.

Competition Committee

Leads: **Andy Gibson**, commissioner@texashockeyleague.com

Responsible for the leveling and placement of teams, and for positioning the league for the best possible competitive balance in future seasons, all while growing high school hockey.

Discipline & Rules Committee

Leads: **Jason Ragsdale**, governor@texasscholastichockeyleague.com

Determines discipline for infractions and forms dedicated subcommittees to review individual incidents.

Zoning & Eligibility Committee

Leads: **Mark Snyder**, governor@texasscholastichockeyleague.com

Oversees club zoning boundaries and player eligibility across the league.

A Note on How Committees Operate

- Every committee will draw in people from around the league. If you have the passion or experience to help, there is a seat for you.
- Subcommittees will be formed as specific needs and incidents arise.
- All committees will request that the Commissioner be an active participant whenever available.

In the game together — Texas Scholastic Hockey League

texasscholastichockeyleague.com · commissioner@texasscholastichockeyleague.com